

PADDLING GUIDE – 2017

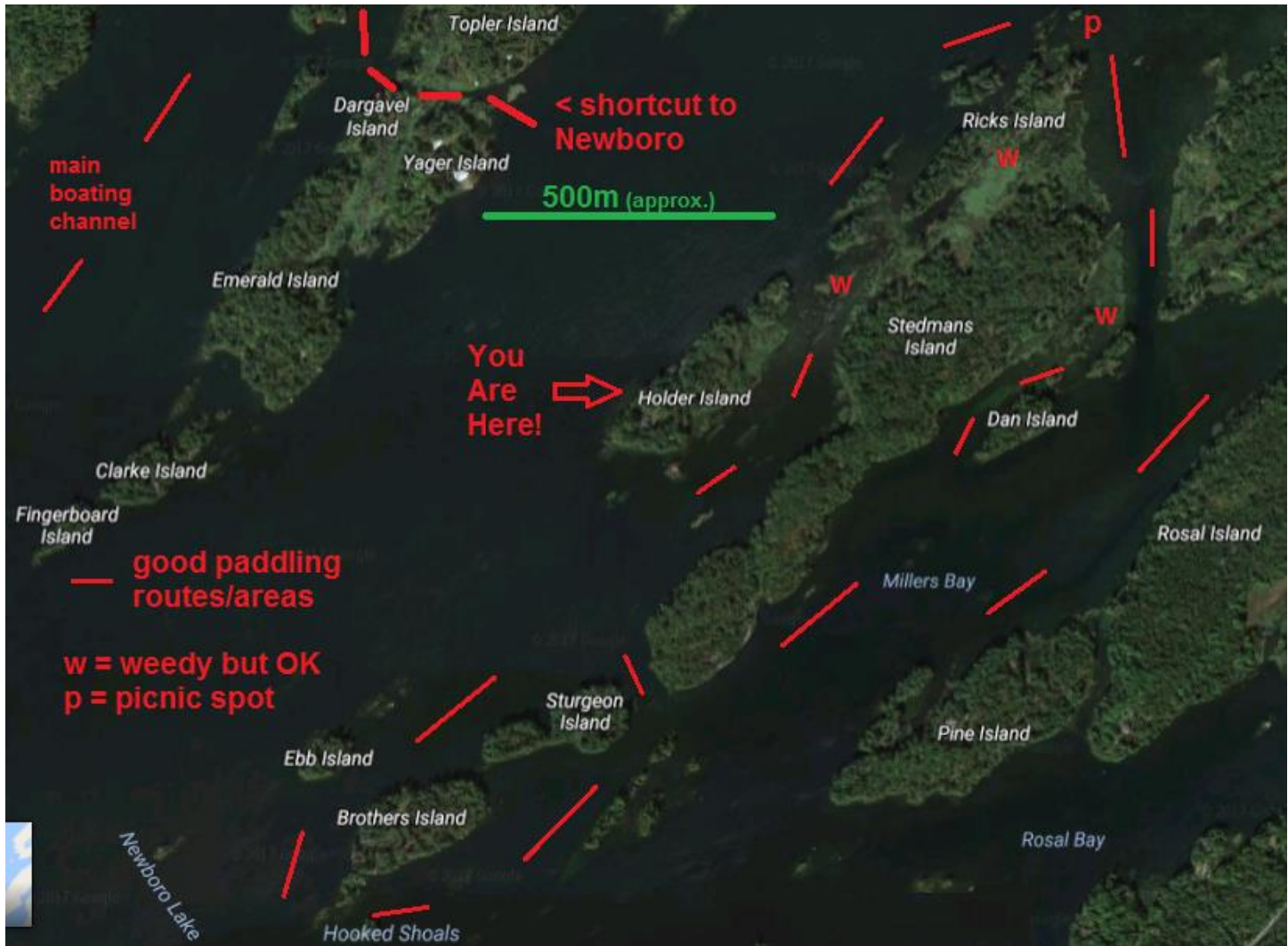
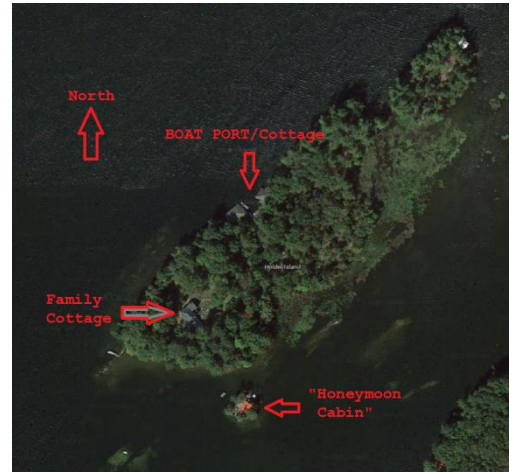
Holder Island on Newboro Lake

For all paddlers - canoes, kayaks, stand-ups - Enjoy!

There's plenty of opportunity for all paddling options on Newboro Lake. There are many islands and sheltered bays right near our island so feel free to explore.

Note however that Newboro Lake is large and can be dangerous for inexperienced boaters if windy. Winds tend to blow mostly from the west or southwest, so shelter can be found behind the numerous islands. Some parts of the lake are also very shallow and weedy, which can make paddling difficult.

Paddling a canoe from Holder Island to Newboro wharf usually takes about 30 minutes one way (2km approx.).



This view shows some of the better canoe paddling areas, along with areas that are shallow and weedy but still OK - in fact usually busy with wildlife such as ducks, turtles, etc. A few small "picnic" islands can be found in the lake - places where you can park the boat and go for a swim.

So that covers just the area within 1 or 2 km. of Holder Island. Newboro Lake is much bigger than this, so feel free to explore all day! Ask us for larger maps if needed. Most islands and shorelines on Newboro Lake are privately owned - so do not assume that you can park your boat and walk anywhere just because "nobody is around". The only camping spot we are aware of is at the Newboro Lock (part of the Rideau Canal system) adjacent to the Newboro wharf.

To Infinity, and Beyond...

Holder Island and Newboro are near the north end of Newboro Lake. Our lake is large and sprawling, with numerous bays, channels and islands to explore. If you wish to make a longer trip, pack a lunch and consider paddling around Newboro Lake or beyond! The historic and world-heritage-designated Rideau Canal connects Newboro Lake to a long chain of lakes and rivers, stretching from Ottawa to Kingston.

To the north, you can paddle over to Newboro, or up through the canal and over to Westport for some ice cream! Or, head south and visit Clear Lake, Indian Lake, and the village of Chaffey's Lock.



BE SAFE! Recommendations for Novice Paddlers

Please tackle any longer paddling trips on Newboro Lake or beyond with caution. Check the distance carefully and match to your paddling abilities, time available, and the conditions, especially wind, to make sure you're not over-reaching. Above all, be safe please!

- place all important items (like cell phones etc.) into a waterproof dry-bag - accidents can happen
- take drinking water, and use sunscreen, the sun can be very intense on the water and you don't notice it
- take the Canada Pleasure Craft Boating Safety course and get the Card (eg. www.safetyafloat.ca)
- all small watercraft, including canoes, are required to at least have: 1 PFD for each person; a buoyant rope (at least 15m), a noise-making device (eg. whistle), a bailer, a flashlight (if boating in darkness) - we provide paddles, PFDs and the standard "orange jug" container to our rental guests which contains these safety items